

ISA Table Base Assembly Procedure :

1900 - City

7800 - Mikos (shown)

4300 Supreme

6000 Dart bases T and X

2000 - Bistro

8000 - Napa

4500 Supreme II

4100 Disc

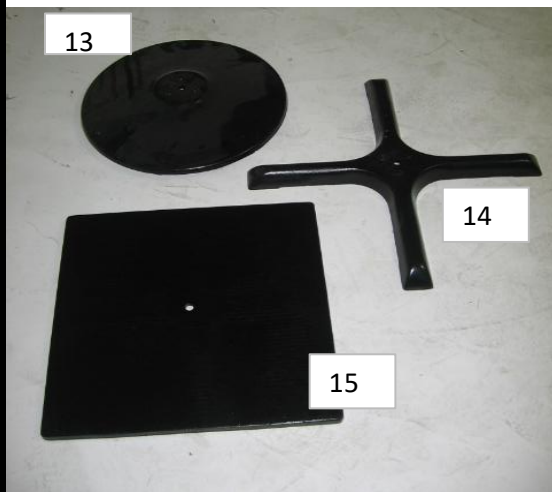
(also can be followed for other WOOD column bases)



Parts :

- 1 7800 Miko base (available 2 sizes)
 - 2 optional Plated cover
 - 3 1/4-20 levelers
 - 4 Dining ht. column (25")
 - 6 Red Tip Dining Ht. (26 1/8")
 - 10 10" Top Plate
 - 11 18" Top Plate (30" base or Larger)
 - 12 3" or 4" centering block depending on column dia
- Tools -
3/4" socket or Ratchet to tighten base

BASE Models or Options



Columns

- 4 Dining ht. column 4" dia. (25") 30" or larger bases
- 5 Bar ht. column 3" dia. (38")
- 5 Bar ht. column 4" dia. (38") (30" or larger bases)

Threaded rods

- 7 Grey Tip Dining Ht. (26 5/8") (Bistro and City base)
- 8 Grey Tip Bar Ht. (39 5/8")
- 9 Red tip Bar Ht.

Base Bottom Models

- 13 1900 City base (available 3 sizes)
- 14 2000 Bistro base (available 4 sizes + T-base)
- 15 8000 Napa base (available 2 sizes)

STEP 1

- a Build base upside Down
- b Fit Rod into top of the TOP PLATE (10 or 11)
- c Ensure Welded Nut is in-between ribs

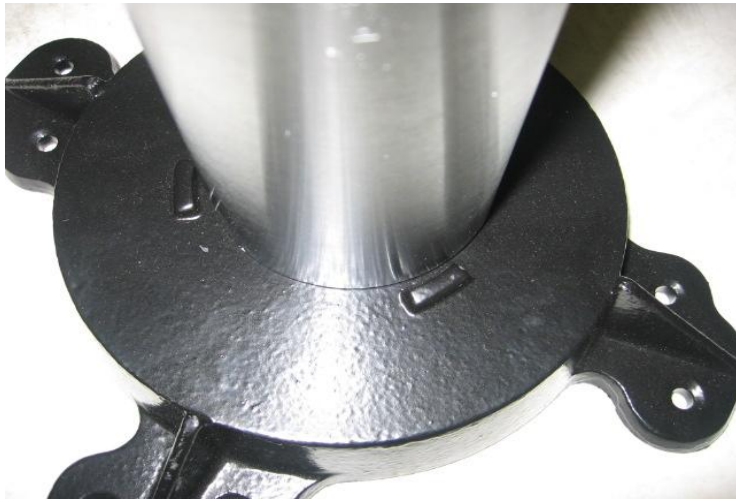
HINT: A piece of Cardboard or wood under the base will help hold the Weld nut between the ribs in the top plate



HINT



ISA Table Base Assembly Procedure :



STEP 2

- a fit the Column over the Threaded rod in the top Plate
- b 3" column fit inside the guide marks (shown)
4" column fits over the guide marks

- c fit the centering block or the metal insert to the bottom of the column. (used to centre column and reduce movement)

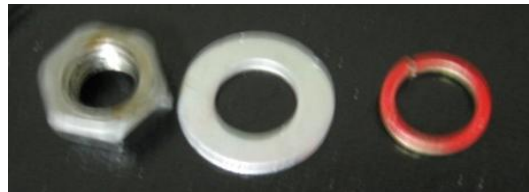


- OPTION**
- d if a plated cover plate is used - over column



- e Fit cast base Plate over column
HINT: If the levelers are put in first it allows the bottom plate to be picked up easier and positioned)

- f Use washer, lock washer and 3/4" nut to tighten base together



- G** turn over - to have a completed table base

